

BuckleyBrown
ESTATE AGENTS



£135,000

Manor House, Mansfield Woodhouse,
Mansfield,



Welcome to **BuckleyBrown**, where every home is carefully presented, so you can explore with clarity and confidence.

BuckleyBrown
ESTATE AGENTS

This is a very well-presented two-bedroom ground floor apartment, offering two generously sized double bedrooms, one of which is currently used as a large dressing room. It is the largest apartment within the building and presents to a high standard throughout.

Tim, Valuer



STYLISH AND SPACIOUS GROUND FLOOR LIVING

Attractive and spacious living, creating the perfect first home

From the moment of arrival, the ground floor two-bedroom flat presents well, with a tidy and well-maintained exterior and an inviting overall feel. Internally, the accommodation is spacious and well presented throughout, offering a comfortable and practical layout. The property makes a strong impression and is well suited to those seeking a home with good long-term appeal.



THE FINER DETAILS

Well-Presented Two-Bedroom Flat with Parking in Mansfield Woodhouse

This property is a two-bedroom flat located in Mansfield Woodhouse, situated within a convenient and well-established residential area. The property offers good access to local amenities, transport links, and surrounding facilities, making it well suited to a range of occupiers.

Internally, the accommodation is well laid out and includes an entrance hall providing access to the main living areas. There is a fitted kitchen, along with a separate dining area and a comfortable living room. The property also benefits from useful built-in cupboards and additional storage space, enhancing practicality throughout.

The flat comprises two well-proportioned bedrooms, both offering comfortable accommodation, together with a bathroom fitted to serve the household.

Externally, the property benefits from a private car park, providing convenient off-street parking.

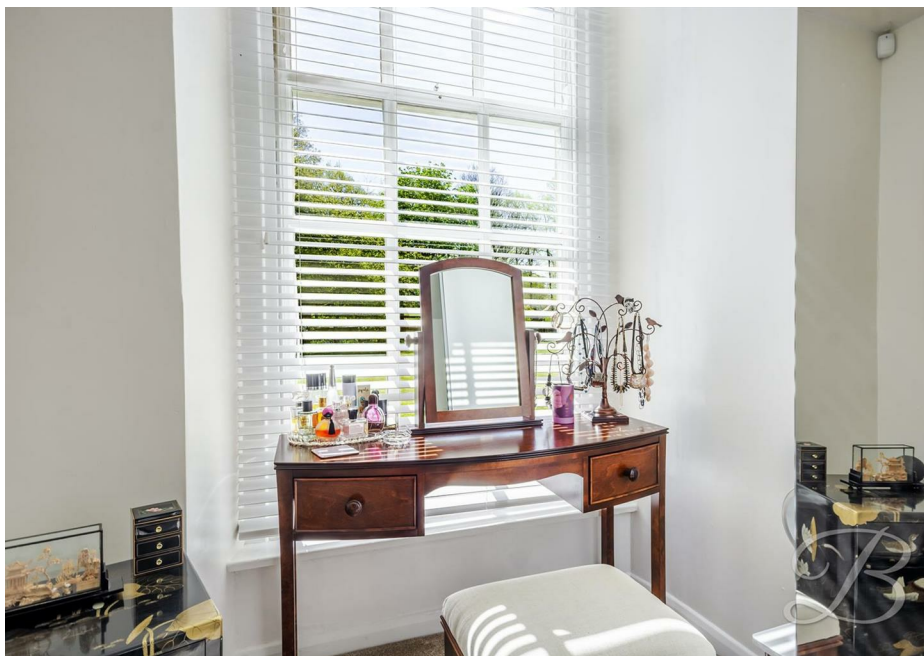




BuckleyBrown
ESTATE AGENTS







LIFE IN MANSFIELD WOODHOUSE

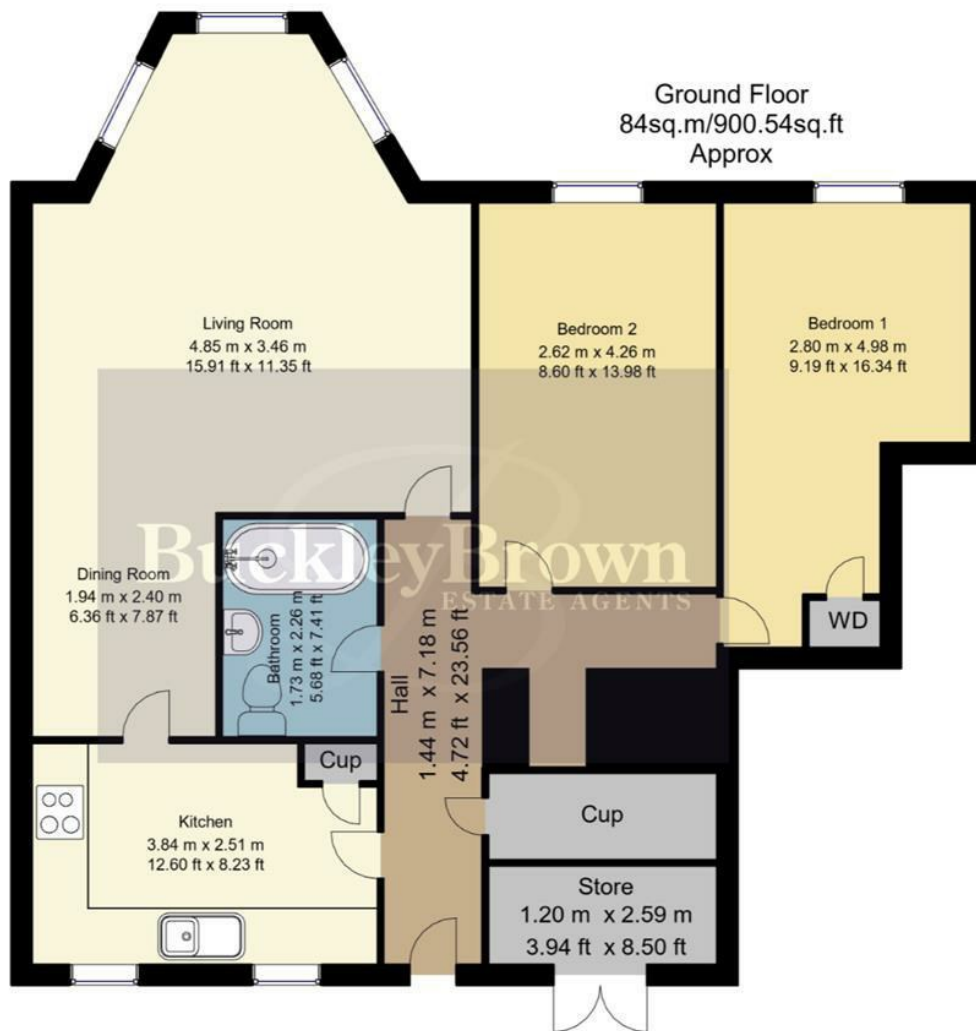
Mansfield Woodhouse is a popular and well-established suburb located to the north of Mansfield town centre, offering a pleasant residential setting with a strong sense of local character.

Combining everyday convenience with access to green spaces, the area appeals to a wide range of buyers seeking a balance between town living and community atmosphere.

The area itself has a proud heritage and a welcoming feel, centred around its historic High Street and traditional market place. Residents benefit from a variety of local amenities, including independent shops, supermarkets, schools and healthcare facilities, along with a selection of cafés, pubs and community services. This well-served environment makes Mansfield Woodhouse particularly attractive to families, first-time buyers and those looking to remain within an established community.

Surrounded by attractive countryside and green spaces, Mansfield Woodhouse is well suited to those who enjoy outdoor living. Nearby parks, woodland areas and open countryside provide opportunities for walking, cycling and recreation, while the wider Sherwood Forest area is easily accessible for longer countryside outings.





Whilst every attempt has been made to ensure the accuracy of the floor plan contained here, no responsibility is taken for incorrect measurements of doors, windows, appliances and room or any error, omission or misstatement. Exterior and interior walls are drawn to scale based on interior measurements. Any figure given is for initial guidance only and should not be relied on as basis of valuation. These plans are for marketing purposes only and should be used as such by any prospective purchase. Specially no guarantee is should not be relied on as a basis of valuation. These plans are for marketing purposes only and should be used as such by any prospective purchase. Specifically no guarantee is given on the total square footage of the property if quoted on this plan.

Key Features

Two-bedroom flat located in Mansfield Woodhouse

Situated in a well-established and convenient residential area

Entrance hall providing access to all main accommodation

Separate dining area

Useful built-in cupboards and additional storage space

Two well-proportioned bedrooms

Designated parking space providing off-street parking

BuckleyBrown
ESTATE AGENTS



These particulars are intended as a guide only and do not form part of any offer or contract. All descriptions, measurements, images and plans are provided for illustration purposes and should not be relied upon as statements of fact. Prospective purchasers should satisfy themselves as to the accuracy of the information. Buckley Brown Estate Agents accept no liability for any loss arising from reliance on these details.

© Buckley Brown Estate Agents 2026. All rights reserved.

Exceptional homes deserve
exceptional representation.

Let's Chat.

01623 633633

mansfield@buckleybrown.co.uk

buckleybrown.co.uk

BuckleyBrown
ESTATE AGENTS